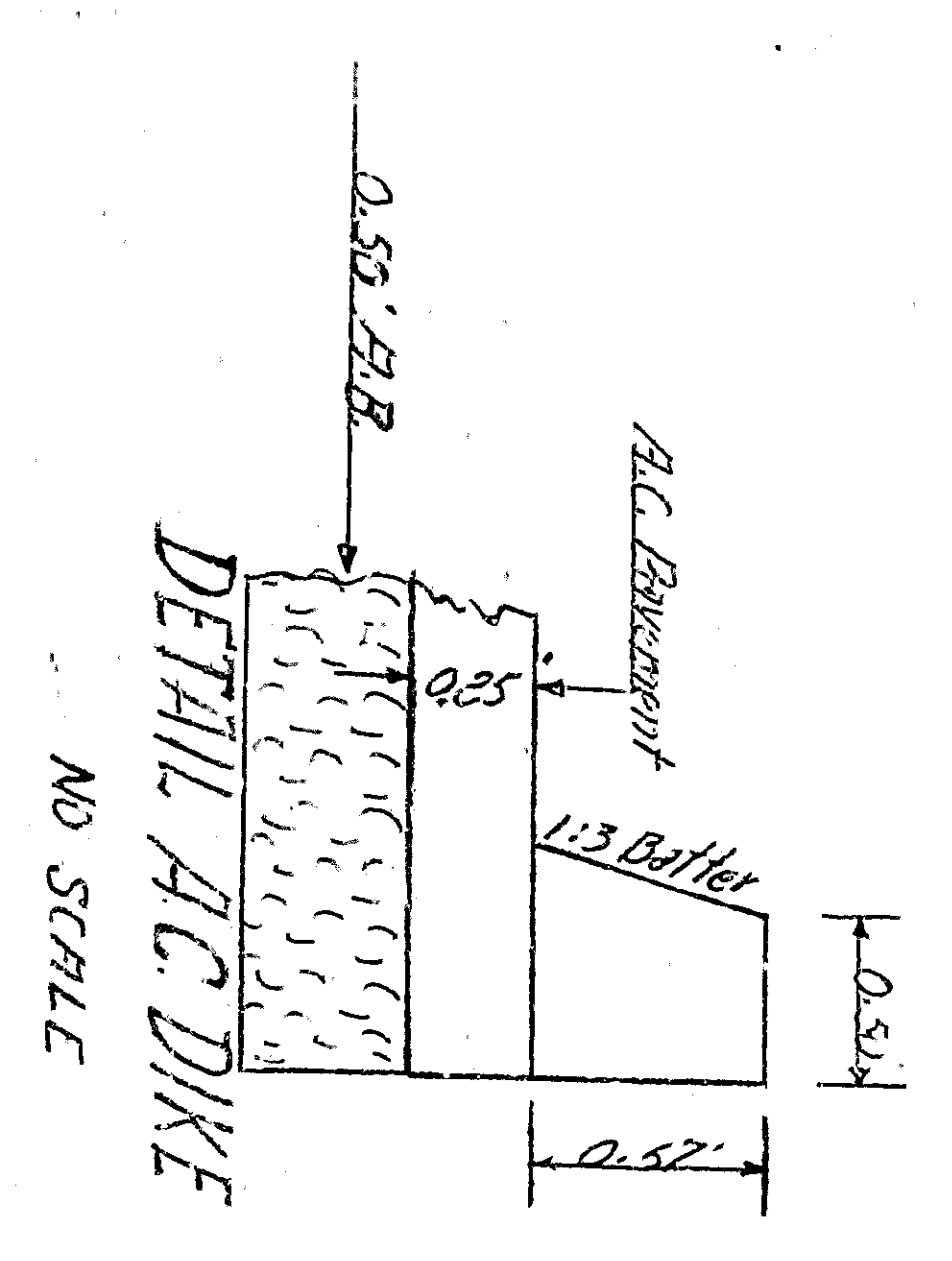
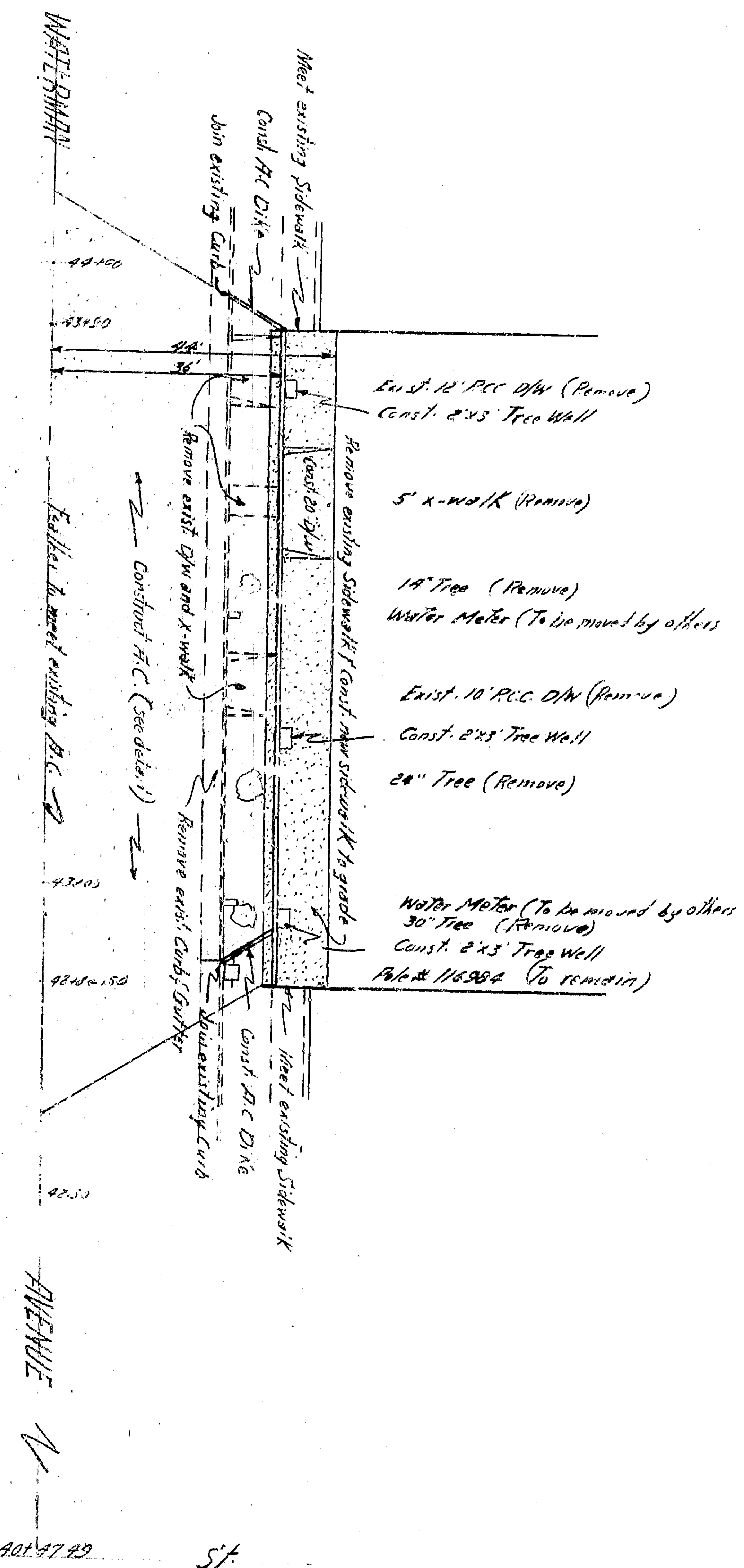
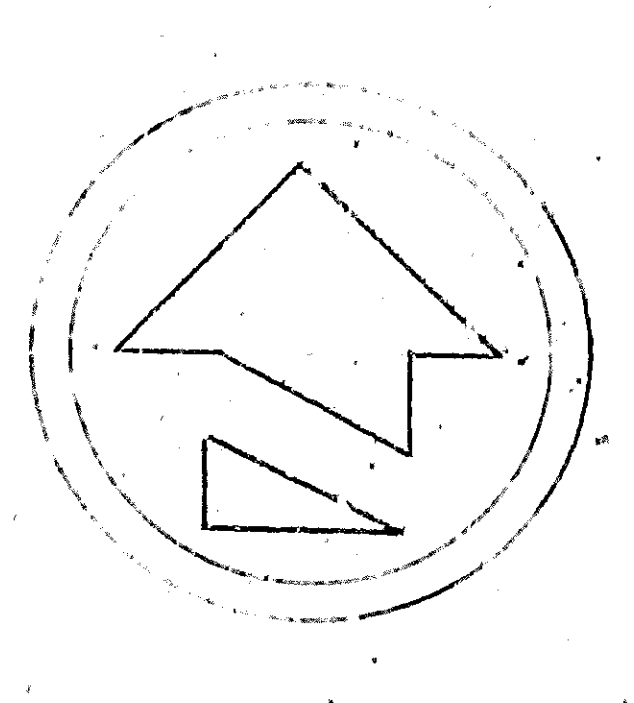
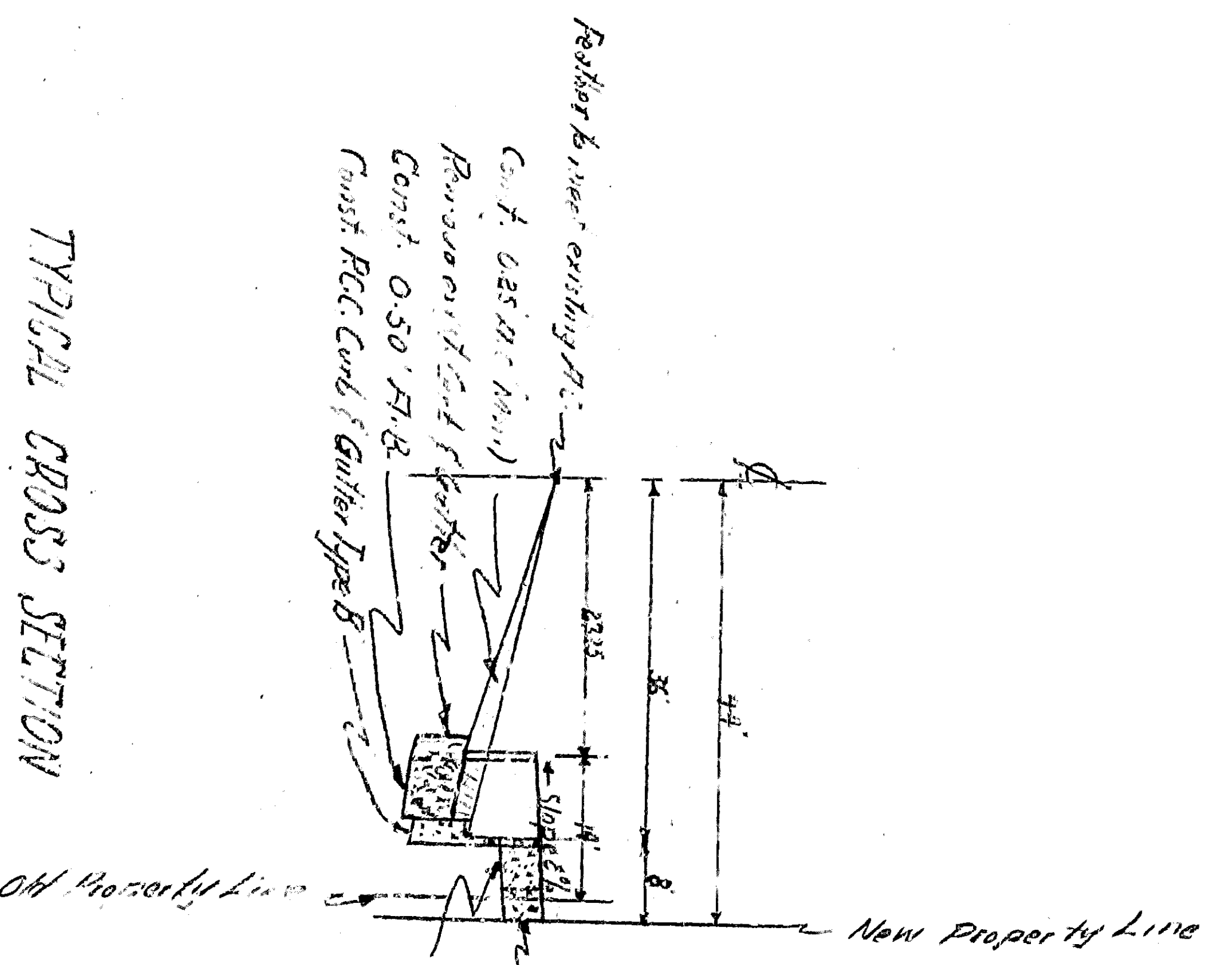


GENERAL NOTES:
1. All work indicated on this plan shall be done in accordance with applicable provisions of Standard Specifications for Road and Street Construction, 2007 and Standard Drawings No. DS-1 and DS-2 as shown in the Office of the City Engineer.

APPROVED	DATE	DEPARTMENT OF ENGINEERING
<i>[Signature]</i>	12/14/11	CITY OF ST. LOUIS
REGISTERED CIVIL ENGINEER NO. 3380	DRAWN BY <i>[Signature]</i>	IMPROVED W. P. R.
CHECKED BY <i>[Signature]</i>	RECOMMENDED BY <i>[Signature]</i>	2015 W. P. R.
SHEET 1 OF 1	SHEET	



GENERAL NOTES:
1. All work indicated on this plan, shall be done in accordance with applicable provisions of Standard Specifications for Road and Street Construction, 2007 and Standard Drawings No. DS-1 and DS-2 as they apply to the work of the City Engineer.

APPROVED	DATE	DEPARTMENT OF ENGINEERING
<i>[Signature]</i>	12/14/11	CITY OF ST. LOUIS
REGISTERED CIVIL ENGINEER NO. 3380	DRAWN BY <i>[Signature]</i>	IMPROVED W. R.
CHECKED BY <i>[Signature]</i>	RECOMMENDED BY <i>[Signature]</i>	2015 W. R.
SHEET 1 OF 1		